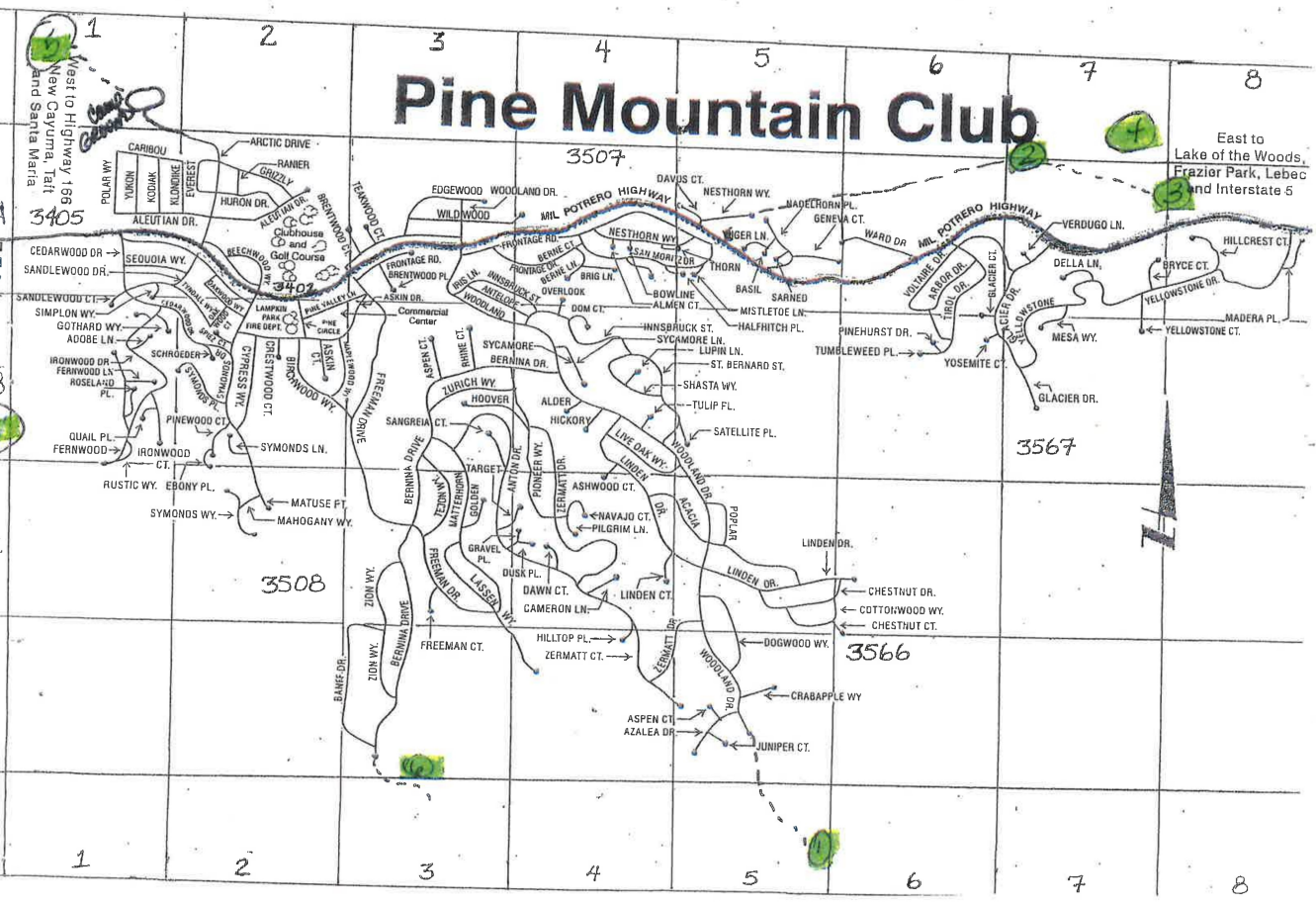


# Pine Mountain Club



East to  
Lake of the Woods,  
Frazier Park, Lebec  
and Interstate 5

West to Highway 166  
New Cayuma, Taft  
and Santa Maria

1 2 3 4 5 6 7 8

## Hiking Trails

Pine Mountain Club offers some great hiking. Some trails are easy; others are not. In any case, the thin air at 5500+ feet will make any exercise in this area a challenge. Be sure to take water and to notify someone of your plans before you leave.

- 1) **The Woodland Waterfall** The shortest of the trails in Pine Mountain Club is also the most strenuous and it is not suitable for small children. Though it is only 3/4 of a mile long, this trail winds over rock slides and up a stream bed to a beautiful pair of small waterfalls. It is stunning in the spring and early summer when the run off is the heaviest.

Drive to the top of Woodland Drive and park in the cul-de-sac. A sign marks the entrance to the trail. Follow the path along the stream as it winds through the canyon! Please do not trespass on the lot next to the trail. As you near the base of the waterfall, the trail turns into the rocks that have fallen in the stream bed.

After reaching the lower falls, think twice before climbing to the upper section. The climb up is very difficult and the climb down is even harder. The rocks are very slippery. If you do reach the top of the falls, continuing up the mountain is very difficult and not recommended.

- 2) **San Emidio Canyon** The oldest inland highway in California is on Pine Mountain Club property. Spanish missionaries found gold in San Emidio Canyon and later, US soldiers made their way to Fort Tejon along this path. Watch for smelter pits and the old mine shaft near the rusty sign post. Near the end of the trails stands an enormous "witness" tree (a surveyor burned directions on the trunk). The trail ends at the gate to a private ranch further down the canyon.

To get to this trail, drive east on Mil Potrero and turn left on Nesthorn Way. Follow the paved road and park at the cable. Hike along this road approximately 3/4 of a mile. Cross the stream and follow the road for another 1/4 mile. At this point the hard road turns right and a wagon trail veers down the canyon to the left. Follow the wagon road. The trail crosses the juncture of two creeks and follows along the floor of this historic canyon for approximately 2 1/2 miles.

- 3) **The Whitener Tree** The Whitener Tree is one of the largest Ponderosa Pines in California and it is 600 to 1000 years old. This tree is clearly visible from Mil Potrero Highway 1/4 mile east of the PMC sign, but it is even more majestic as you stand at its base and gaze up through its branches.

To get to the Whitener Tree, follow the directions for San Emidio Canyon, but continue walking along the hard road as it starts uphill to your right. The old Mil Potrero Road follows the stream approximately 2 1/2 miles until it rejoins the new highway at the base of the Whitener Tree.

- ④ **Silverville Mine** This mine is apparently still worked by the claim holder; so please do not trespass. It's a long hike, but one that is worth the effort.

Drive east on Mil Potrero Highway to the parking area on the right just before passing the Whitener Tree. To get to the base of the tree, you go down a fairly steep embankment. From there follow a dirt road down around a marshy field. On the far side of the bog, a wagon road veers off to the right.

Follow the trail and stream approximately 3 miles through the canyon. The mine is near the end of the trail. Several old cables are strung between the trees. They kept travelers out of the canyon during winter months.

- ⑤ **Eagle Pass Ridge** This is an easy trail that only takes about 45 minutes and you can have the thrill of walking on a scarf joint of the San Andreas Fault. From the Clubhouse, go west to Arctic Drive. Follow Arctic straight up to the campground and park your car. On foot, go the extreme west end of the camp and follow the trail. You will soon be walking on the scarf from the San Andreas fault.

Follow the trail for 3/4 miles until you come to a narrow ravine. Turn left and go downhill for 60 yards, where you can make a sharp left turn and start on the return trail. The return trail crosses meadows and passes deep through the Pinon Pine forest. As you get closer to PMC, be sure to stay to the uphill side of the mobile homes.

There are other trails that connect from this trail should you wish to extend your hike. At the ravine, you can also turn right, or keep going straight heading west. Both trails eventually dead end, where you can turn around and come back the way you came.

- ⑥ **The Enchanted Forest** This short hike is very pretty any time of year, but it is particularly delightful in early spring when there is still a little snow in the white firs and Jeffrey pines. Many deformed trees can be seen along this winding path, and the lively stream adds to the music of the forest.

From either Woodland Drive or Freeman Drive, take Bernina Drive to the very top and park in the cul-de-sac. Follow the trail along the creek. Eventually the trail crosses the creek under a very large, strangely shaped pine tree. The trail peters out after 1/2 mile or so and you will want to turn back, but the view up the side of Mt. Pinos is lovely and the natural beauty of the area makes the return hike worthwhile.

- ⑦ **Sawmill Mountain** This hike can be easy or difficult, depending on how far you go. Lots of large pines provide a lovely setting for a picnic or just a quiet walk. You can go quite far up this trail until the steepness gets to be too much or until the vehicle trail fades into the trees. You can also detour off one of the trails that connect from this one. Detour on a trail to the right, and you wind up in Mil Potrero Park. Detour to the left, and you wind up heading back toward PMC.

Go west on Mil Potrero Highway, just about 1/4 mile past the sign marking the end of Pine Mountain Club. Just before the wire fence begins on the left side of the road, a trail enters a large meadow and quickly merges with an old, unused vehicle trail. Follow the two ruts up into the forest. The best way out is the way you went in.